

LOOK TOSCANA MINI

Full cassette awning



*Just
enjoy life!*

Lewens
MARKISEN



"That's exactly my style!"



"That's what I call pure pleasure!"

Even small things merit great attention.

The TOSCANA MINI takes up barely any space, yet it performs to maximum effect. Its refined technical features are thought out down to the last detail. A narrow balcony or small patio? Not a problem. The TOSCANA MINI turns any space into a sheltered nook where you can dream the summer away.

With a maximum width of 450 cm and maximum drop of 250 cm, the TOSCANA MINI awning with its sophisticated technical details was developed especially for small balconies and compact spaces. – Teamed with our extensive range of awning fabrics and frame colours, the sleek cassette and elegant design of the TOSCANA MINI will turn even the smallest balcony into your favourite bolt-hole. *

For even greater comfort, choose from the following **additional accessories**:

- ▶ **Radio remote control**
- ▶ **Automatic weather monitoring ***
- ▶ **LED lighting strip**
- ▶ **Support legs**

* Please refer to technical data in the current Lewens price list for possible dimensions and restrictions and for the complete list of electronic accessories.



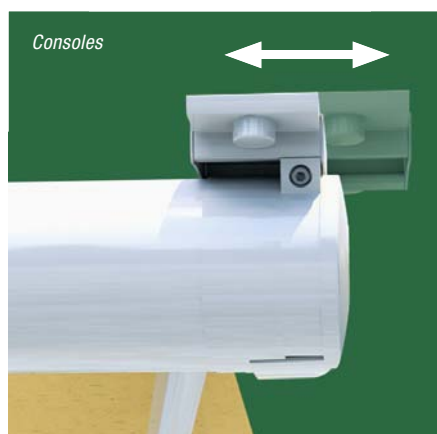
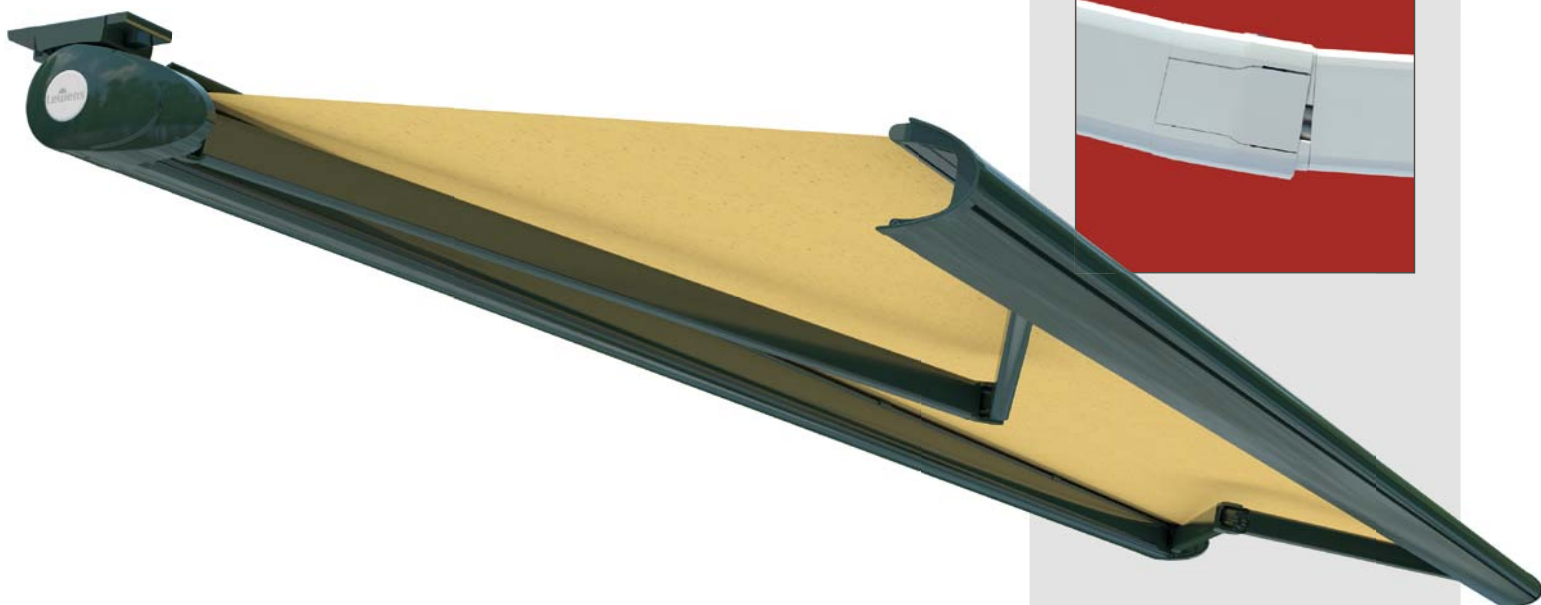


FULL CASSETTE

Fitted to a ceiling, roof projection or balcony, the 10.5 cm high **cassette** provides all-round protection for the awning fabric and conveys a harmonious impression. Hinged arms with an extremely high spring tension ensure a taut sit of the fabric. A plastic sleeve in the **central hinged arm joints** prevents soiling and corrosion of the double cables and increases their service life.



The arm joints: colour uniformity down to the last detail



Consoles

Technical details

The TOSCANA MINI is attached to the wall or ceiling by means of two external **consoles**. To make fitting easier, the consoles can be moved sideways to permit variable attachment (see illustration).

Pitch range

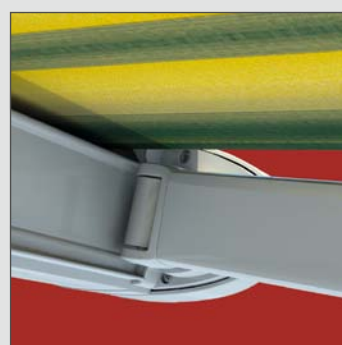
Attachment / drive	Motor drive	Crank drive
Wall-mounted	5 - 60 °	5 - 27 °
Ceiling-mounted	5 - 60 °	5 - 60 °

Due to the special design of the TOSCANA MINI, a larger **pitch angle** can be set during assembly.

max.
60 °

The ideal solution if you want both privacy and protection from the sun.

Look Toscana Mini – full cassette



The fabric cover shell offers an elegant solution for concealing the fabric roller.



Front profile bracket and front profile

SYSTEM



Certification



TÜV Approved
Safety:
in progress



Quality and engineering
conform to
CE standard



Manufactured
and assembled
in Germany

Guarantees



5-year guarantee
on all Lewens system
components



LIFE Guarantee
LEWENS awnings
stand for:

L.UST FOR LIFE
I.NTELLIGENCE
F.REEDOM
E.ASY LIVING

Technical features

TYPE	FULL CASSETTE
Width 1 unit	max. 450 cm
Drops (possible arm lengths)	150 / 200 / 250 cm Special arm lengths possible (extra charge)

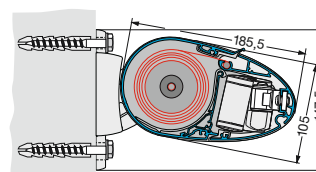
Centimetre-accurate manufacture in all intermediate widths!

Drive	Motor drive (electric motor) , crank drive possible on request (reduced price)
Scope of supply, attachment	<ul style="list-style-type: none"> – incl. wall consoles for concrete B25 C20/25 (for anchor bolts: FAZ II M12) – IMPORTANT: Please specify when ordering whether the awning is to be fitted to the wall or ceiling.
Frame colours	<ul style="list-style-type: none"> – 16 RAL colours and 5 textured finishes to choose from (see LEWENS price list for colour chart) – natural silver: E6/EV 1 anodized; small components silver RAL 9006 – special RAL (extra charge) – special colours and effect finishes on request
Awning fabrics	<ul style="list-style-type: none"> – from our LEWENS collection – branded acrylic, spun-dyed, ultra fade resistant – branded polyester, spun-dyed (extra charge) – Tenara quality sewing yarn
Valance	<ul style="list-style-type: none"> – supplied as standard without valance – valance possible (extra charge)
Accessories	<ol style="list-style-type: none"> 1. Radio remote control / electric motor with integral radio control 2. Sun / wind / rain monitoring 3. LED lighting strip 4. Support legs

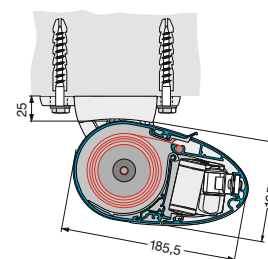
Please refer to technical data in the current Lewens price list for possible dimensions and restrictions and for the complete list of electronic accessories.

Fitting

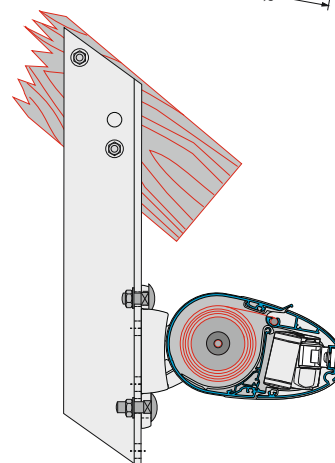
Wall



Ceiling



Rafter



Lewens
MARKISEN

Your stockist will be happy to advise you:

Just
enjoy life!

www.lewens-markisen.de

Subject to technical alterations. Date: 06/2014